

TRACK PAD

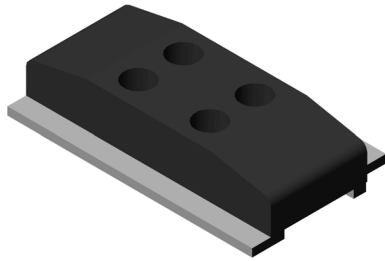
MR RUBBER TRACK PADS are used for sensor paver machine and excavator. The medium Grade polyurethane track pads Combines the best quality of polyurethane and high quality Rubber to provide a durable and long life. Track pads are conventional and interchangeable short pitch types. These pads are designed for low Ground pressure application on construction and Road equipment. It increases traction and protection for delicate surfaces that would be damaged by exposed steel tracks. These Track offers longer operational life and are least expensive. MR BOND Rubber Track Pads are available in variety of shape and wide range of sizes to fit many types of construction machineries.

The Track Pads are used in Sensor Paver Machine. The Sensor Pavers are manufactured by various Manufacturer such as **TITAN, VOGALEE, BITELLI & WRITGEN** In this machines, these Track Pads are used for chain's durability.

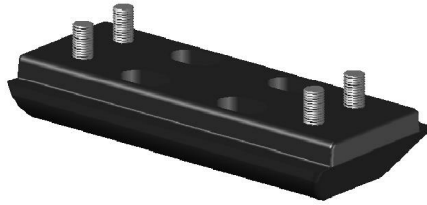
The Rubber Pads protect the road surfaces reduces noise. The Rubber Pads have excellent stability & easy to attaching of detaching. The rubber pads are designed to last longer. The surface area of the segment with Ground has been expanded making it possible for each pad to uphold the weight with Grater efficiency. This is because the weight load per segment is lightened by the virtue of the of the surface contact area having been enlarged. Together with the cut resistant, anti appraising, antilear rubber formulation, it provides superior durability.

Track Pads are made of it two types of Rubber Material (I) Natural Rubber (II) Polurethane

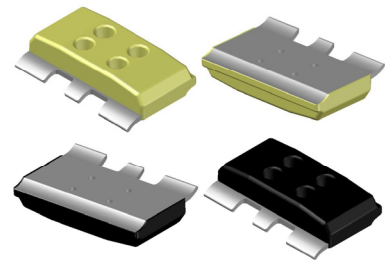
The Track Pads has two parts (1) Steel Base (2) Rubber/Polyurethane. The Rubber/Polurethane can be moulded with steel parts with suitable metal bonding agent.



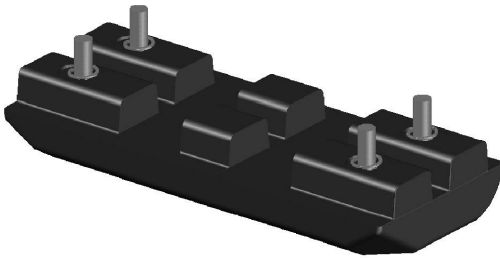
MR-1001 VOGELE TRACK PAD



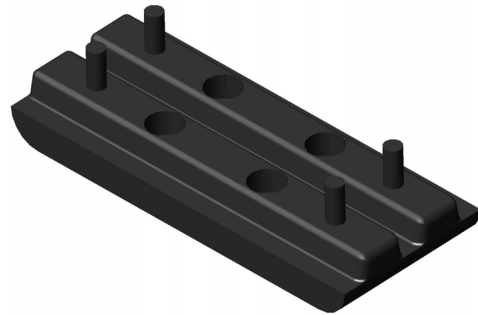
GR-1002



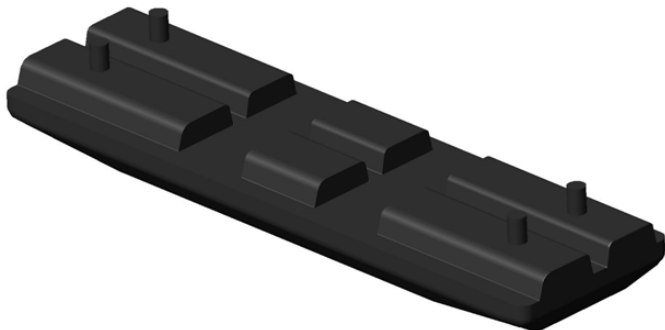
MR-1003 VOGELE TRACK PAD



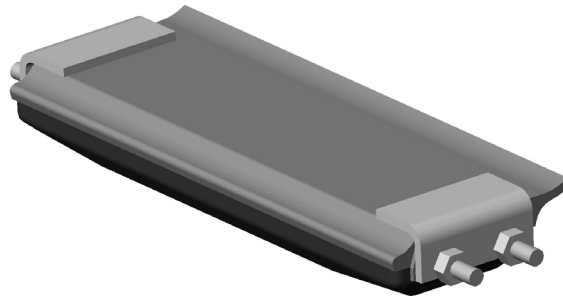
MR-1004



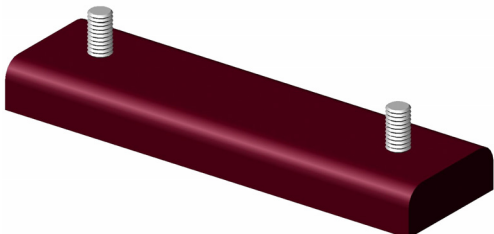
MR-1005 WRITGEN TRACK PAD



MR-1006 TATA HITACHI ZX-120H TRACK PAD



MR-1007



MR-1008 AERO CRUB TRACK PAD